

N40

Granulatori Granulators Schneidmühlen

Mod. N40-70
Mod. N40-90
Mod. N40-120

Caratteristiche tecniche

- Idonei per iniezione, soffiaggio, estrusione e per usi generali.
- Tre modelli base disponibili in più di 70 versioni.
- Tramoggia ribaltabile manualmente per una facile pulizia e manutenzione.
- Camera di taglio con piastre laterali resistenti all'usura.
- taglio a "doppia inclinazione", per ridurre il consumo di energia e la formazione di calore e polvere.
- Completamente insonorizzati per una bassa rumorosità di esercizio.
- Vari sistemi di alimentazione e scarico, sono disponibili, come optional, per ogni esigenza del cliente.
- Sicurezze conformi alle normative CE.

Technical data

- Suitable for injection & blow moulding, extrusion and general purpose applications.
- Three basic models, over 70 versions available.
- Tilting hopper manually operated for easier cleaning and maintenance.
- Cutting chamber with side plates wear resistant.
- Advanced "Scissor" cutting action, reduces energy consumption, heat and dust generation.
- Fully sound enclosed for low operating noise level.
- A range of feed and discharge options are available to meet each customers requirements.
- Safety complies with CE standard.

Piovan

Customers. The core of our innovation

New

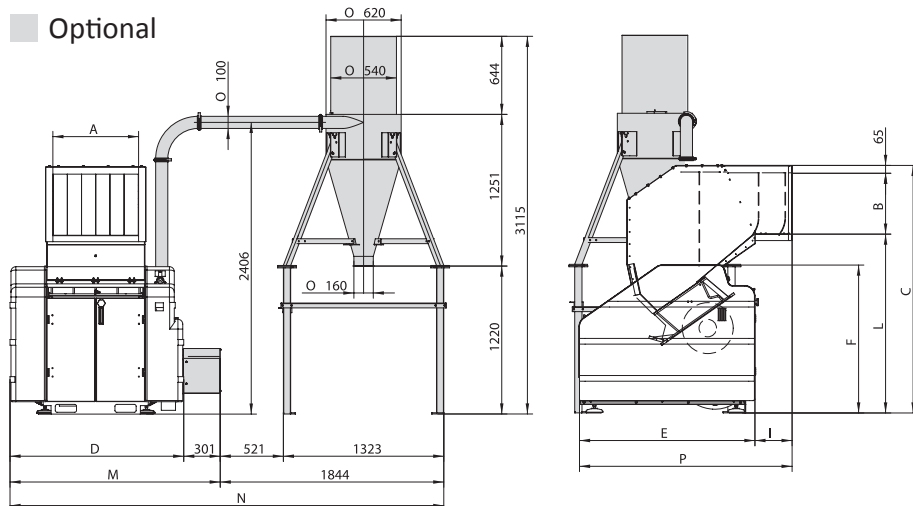


Technische daten

- Entwickelt für Spritzguss-Blass und Extrusion produktion, aber auch als Zentralmühle einsetzbar.
- Drei Standard-Modelle sichern über 70 Ausstattungs-Varianten.
- Kippbarer Trichter manuell gesteuert für leichte Reinigung und Wartung.
- Mahlkammer mit Endplatten, verschleissfest.
- Weiterentwickelter Scherenschnitt "Doppelwinkel", verringert Energieverbrauch Staub und Wärmeentwicklung.
- voll lärmgedämmt verringert Geräuschpegel beim Mahlen.
- Ein Reihe von Materialaufgabe und Entnahmesysteme sind verfügbar um Sonderwünsche zu erfüllen.
- Leichte Wartung nach CE normen.

www.piovan.com

Optional











CARATTERISTICHE - TECHNICAL DATA - TECHNISCHE DATEN

	A	B	C	D	E	F	I	L	M	N	P
N40-70	712	502	2042	1433	1450	1220	308	1475	1733	3577	1758
N40-90	915	502	2042	1636	1450	1220	308	1475	1936	3780	1758
N40-120*	1220	602	2250	1940	1450	1220	308	1585	*	*	1758

*Impianto aspirazione indipendente / Independent air conveying system / Getrennte absaugung systeme mit gebläser und zyklon

CARATTERISTICHE - TECHNICAL DATA - TECHNISCHE DATEN

	 mm	 n°	 n°	 mm	 RPM	 KW	 Ø mm	 Kg/H
N40-70	500x712	3 (5)	2	419	450	22 (30)	8	350-500
N40-90	500x915	3 (5)	2	419	450	30 (37)	8	500-700
N40-120*	600x1220	3 (5)	2	419	450	30 (37)	8	700-1000



Piovan

Customers. The core of our innovation

www.piovan.com