



Penta

A Piovan Company

Plastics
Food & Beverage
Industrial

Company profil

Penta specializes in the design, manufacturing and installation of large-scale systems for the storage and handling of raw materials and ingredients in powdered form used mainly in the plastics and food and beverage industries.

It is an ideal partner whose strengths, besides the technology, lies in the efficiency, the optimization of design and production as well as the customer service that can be guaranteed by its team of experienced personnel.

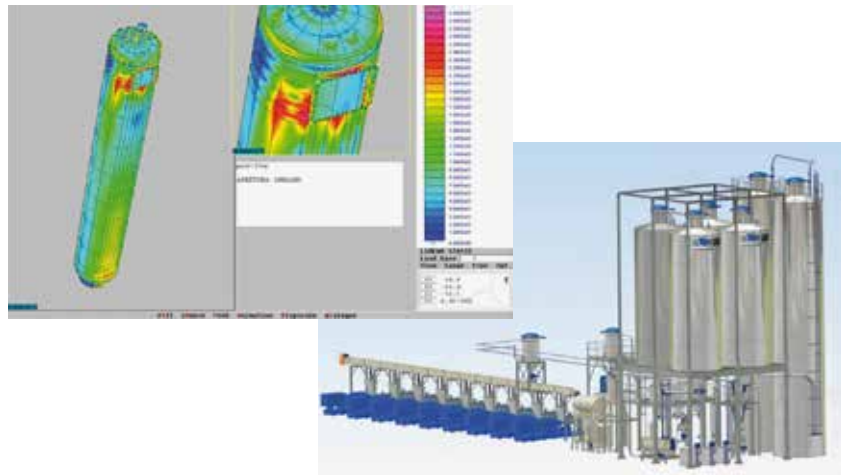
A further fundamental requirement for operating on the global market is a strong financial base.

Penta can safely say that it has adequate proper financial means, as well as assets, to autonomously manage large projects without additional financial costs for the customer. These has further improved thanks to the merge in the Piovan group Penta has a lean and efficient structure with well managed fixed costs which allows very good quality and service to the best possible quality to price ratio.



Engineering

Penta's systems are designed and engineered by a technical team which has learnt its skills and ability both out in the field and in the design and operation of pilot plants, developed and tailor made by Penta to verify the **rheological properties** of the various products and raw materials as well as the size and performance of all the individual components that go to make up the plant.



Manufacturing

Penta's systems are completely made in its own workshops following defined and modern production procedures which include laser cut, steel forming, welding and finishing. Quality control, testing and delivery are also fully executed by Penta.



Forwarding

The end product leaving Penta factories demands particular skills and competence in order to handle the unusual dimensions and weights that must be safely transported and delivered worldwide.

Penta's shipping department provides accurate and easy to identify labelling of the items, granting that packaging fits the type of transport complying to the dispositions and rules of the receiving countries.

Application sectors



Our products and solutions are targeted to PVC dry blend manufacturers, compounders and companies within the extrusion sector. The product range includes silos, storage units, debagging units, conveying systems, filters, sieves, pneumatic and mechanical extruder feeding, plant supervision systems. With reference to the PVC treatment our expertise goes deep and wide, being able to support end-product manufacturers of profiles, pipes, sheets, linings, floorings, clink films, cables. We also supply automatic turbo-mixer feeding system for PVC resin, titanium dioxide, calcium carbonate, fillers, stabilizers, additives, modifiers, liquid plasticizers and pigments, as well as feeding systems for extrusion plants, including supervision system of the production process. Penta is active even in the polyolefin industry.

Site Assembly

Assembly is a very important phase which may affect the correct functioning and therefore the performance of the system, it can be managed in different ways:

- **independently by the customer**, based on clear and detailed layout supplied by the Penta Engineering team;
- by the customer with the on site supervision of specialized Penta personnel;
- **directly by Penta as turn-key project**



Commissioning

Commissioning is a competence developed by Penta in cooperation with the client's personnel, aiming to oversee the practical verification of operating conditions as well as the confirmation of the contractual performances. At the same time Penta provides professional training to the customer's work force who will afterwards be required to operate and maintain the supplied system. This is the time when the job is finalised proving, by on site operation, all the performance and contractual engagements and in turn realizing full job satisfaction for both parties involved.

After sales

Full range of services to keep the system in properly working conditions is provided by high qualified team of specialists.

Range of services includes:

- Help desk
- Remote assistance
- On site visits by qualified specialists
- Spare parts
- Upgrading evaluation
- Refurbishing
- Training sessions



Rigid PVC

- Rigid profiles
- Rigid pipes
- Fittings
- Granulated compound
- Rigid sheet
- Powder compound
- Foamed & massive boards

Soft PVC

- Hoses
- Granulated compound
- Sheet
- Clink Film
- Cable compound
- Flooring materials

• Plastisol

- Artificial Leather
- Car Interior
- Coated Textiles
- Wall Paper
- Roto-molding

WPC

- Profiles
- Boards

Polyolefin

- PP
- PE
- PS
- PET





Full automatic plastic compounding plant

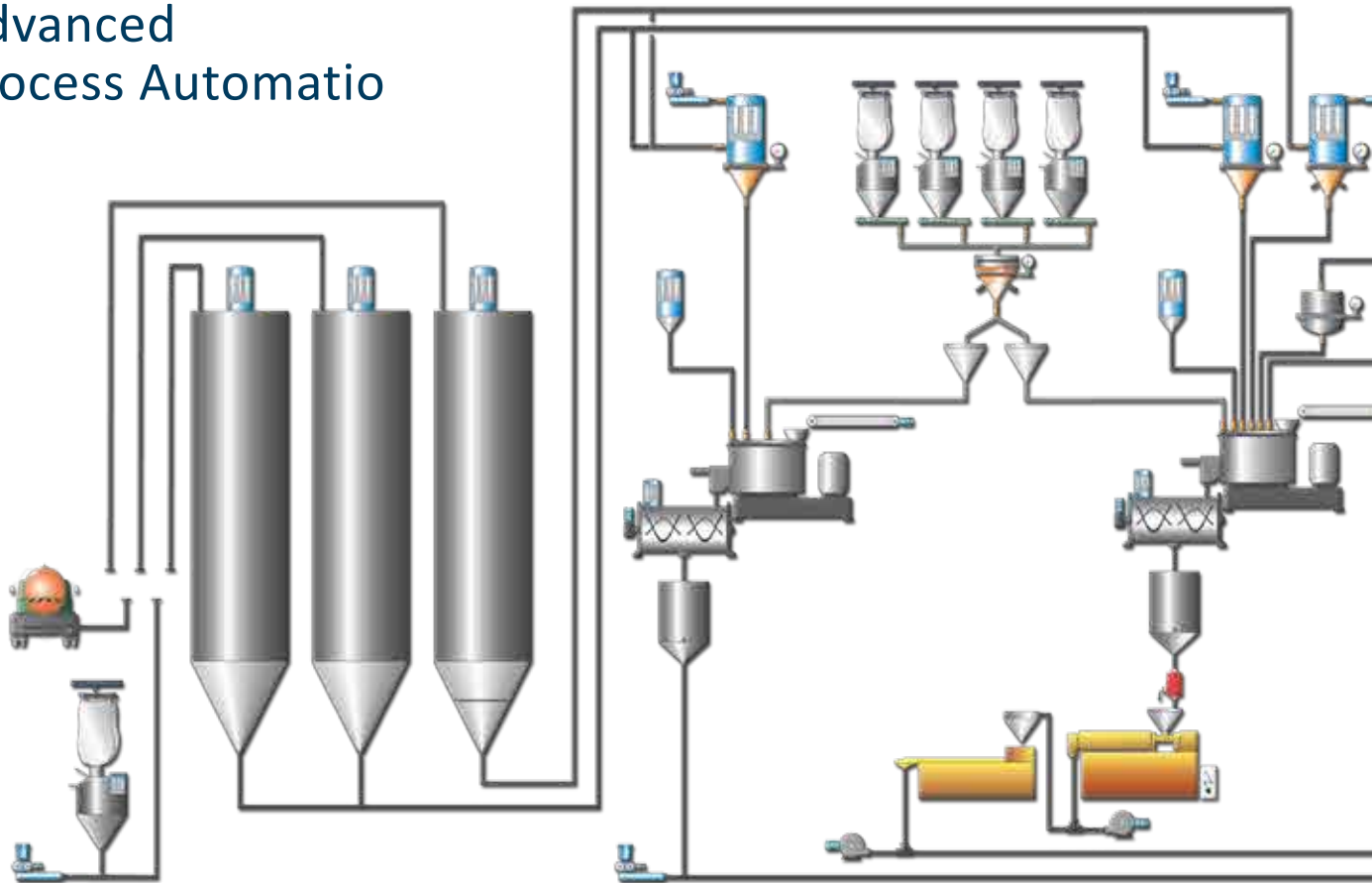


Raw materials de-bagging for bags & big-bags



Outdoor raw materials storage banded silos

Advanced Process Automatic



Penta's installations worldwide are the tangible confirmation of the technological level, reliability and professionalism of its solutions.



Raw materials electronic scale



Mixers' automatic feeding

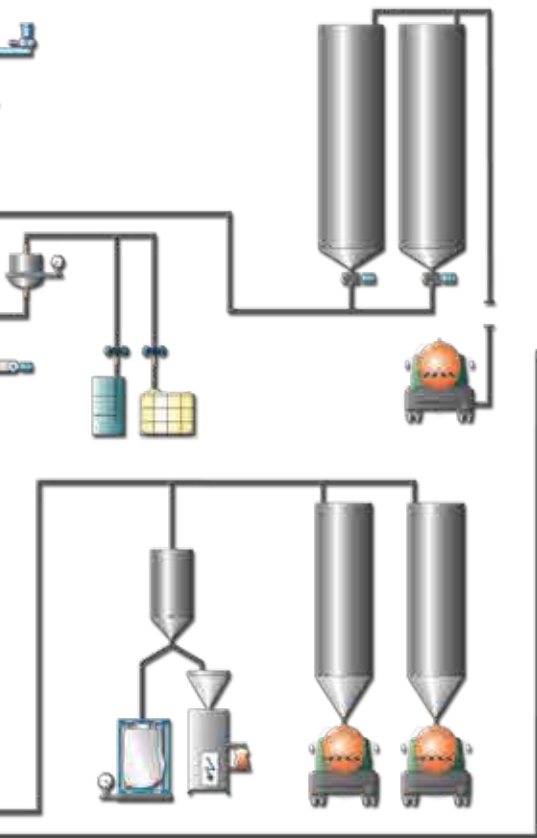


Additives metering & weighing

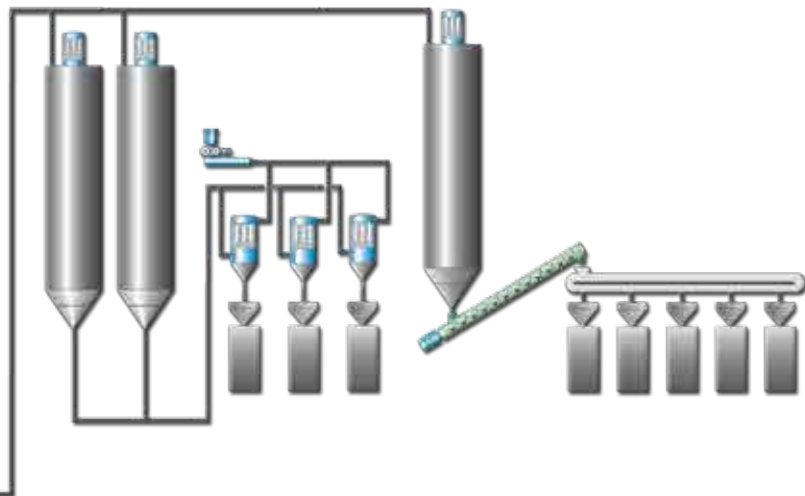


Outdoor raw materials storage silos

Penta's business is in the automation and handling of bulk materials used in a variety of compounding industries where **efficiency, flexibility** and **reliability** are fundamental requirements for a long and lasting success.



PLC/PC
Fully computerized
driving & management
systems



Compounded product storage silos



Mechanical extruders' feeding



Vacuum loaders

Piovan Group

Piovan

Piovan S.p.A.
Santa Maria di Sala
(VE) Italy
Tel. +(39) 041 5799111

Una-Dyn

Universal Dynamics Inc.
Woodbridge,
Virginia (U.S.A.)
Tel. +(1) 703 490 7000

Fdm

FDM GmbH
Junkersring 24, D-53844
Troisdorf (Germany)
Tel. +(49) 22 412660600

Aquatech

Aquatech S.r.l.
Santa Maria di Sala
(VE) Italy
Tel. +(39) 041 5768814

Energys

Energys S.r.l.
Santa Maria di Sala
(VE) Italy
Tel. +(39) 041 5799111

Penta

A Piovan Company

Penta
Poggio Renatico (FE) Italy
penta@penta.piovan.com
Tel. +(39) 0532 826301
Fax +(39) 0532 826399

 penta.piovan.com